








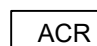




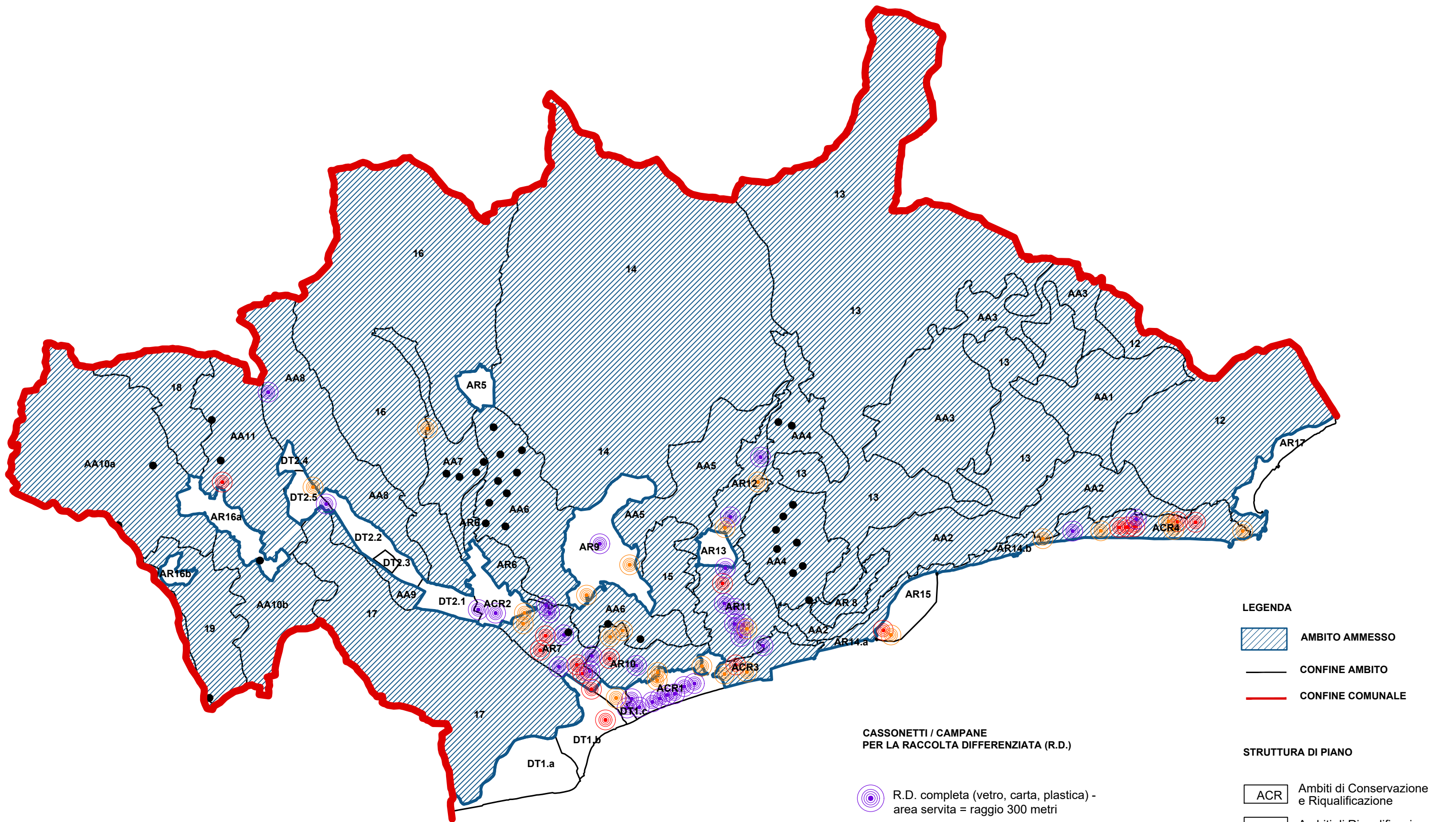





- LEGENDA**
-  AMBITO AMMESSO
  -  CONFINE AMBITO
  -  CONFINE COMUNALE




- RETE ACQUEDOTTO**
-  tubazione di distribuzione
  -  tubazione di distribuzione primaria
  -  tubazione di distribuzione secondaria
  -  tubazione in progetto
  -  vasca
  -  vasca
  -  stazione di pompaggio

- STRUTTURA DI PIANO**
-  ACR Ambiti di Conservazione e Riqualificazione
  -  AR Ambiti di Riqualificazione
  -  DT Distretti di Trasformazione
  -  AA Ambiti Agricoli
  -  Concentrazioni Volumetriche




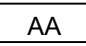



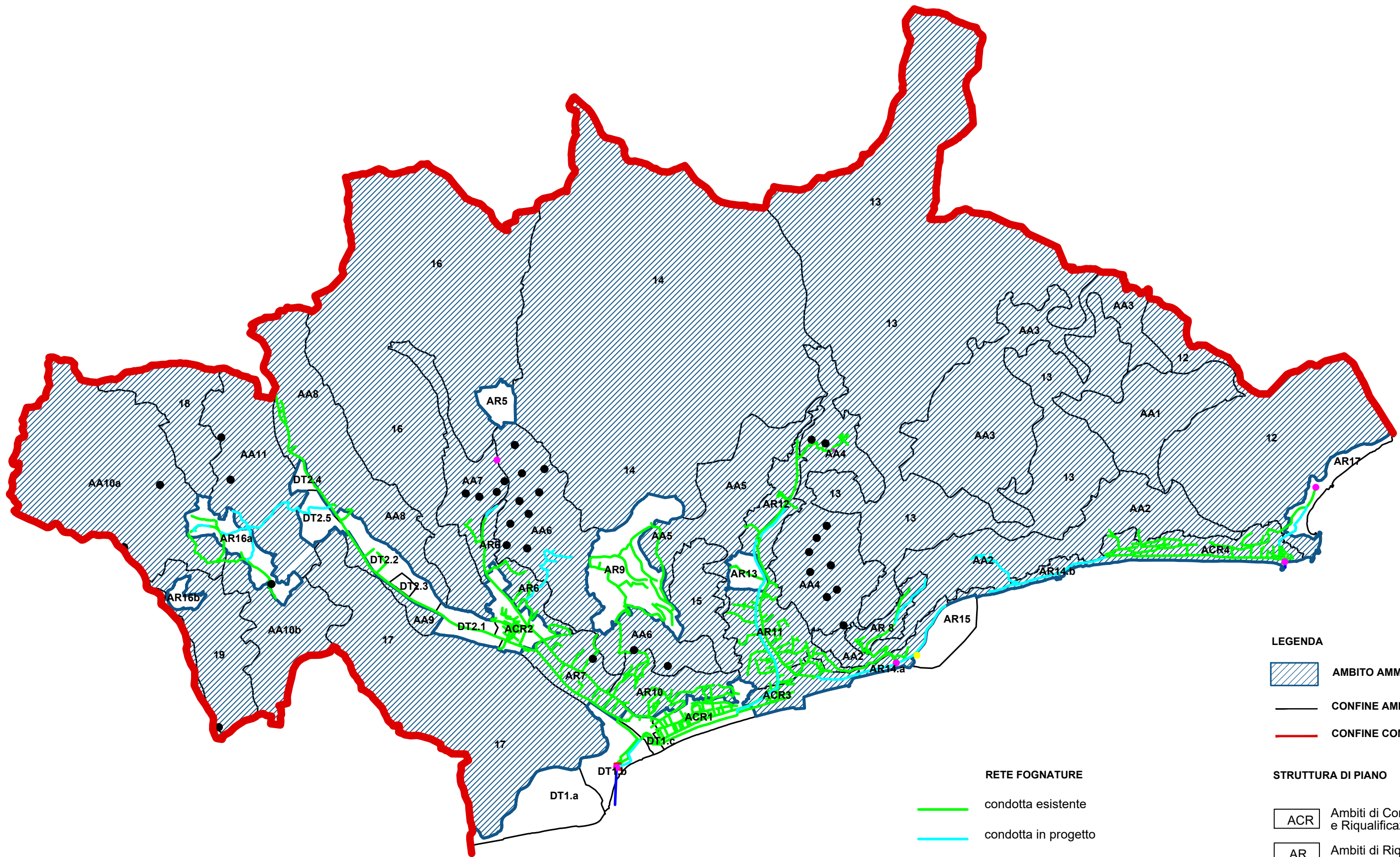
- LEGENDA**
-  **AMBITO AMMESSO**
  -  **CONFINE AMBITO**
  -  **CONFINE COMUNALE**

**CASSONETTI / CAMPANE  
PER LA RACCOLTA DIFFERENZIATA (R.D.)**

-  R.D. completa (vetro, carta, plastica) -  
area servita = raggio 300 metri
-  R.D. 2 materiali - area servita = raggio  
300 metri
-  R.D. 1 materiale - area servita = raggio  
300 metri

**STRUTTURA DI PIANO**

-  **ACR** Ambiti di Conservazione  
e Riquilificazione
-  **AR** Ambiti di Riquilificazione
-  **DT** Distretti di Trasformazione
-  **AA** Ambiti Agricoli
-  **Concentrazioni Volumetriche**

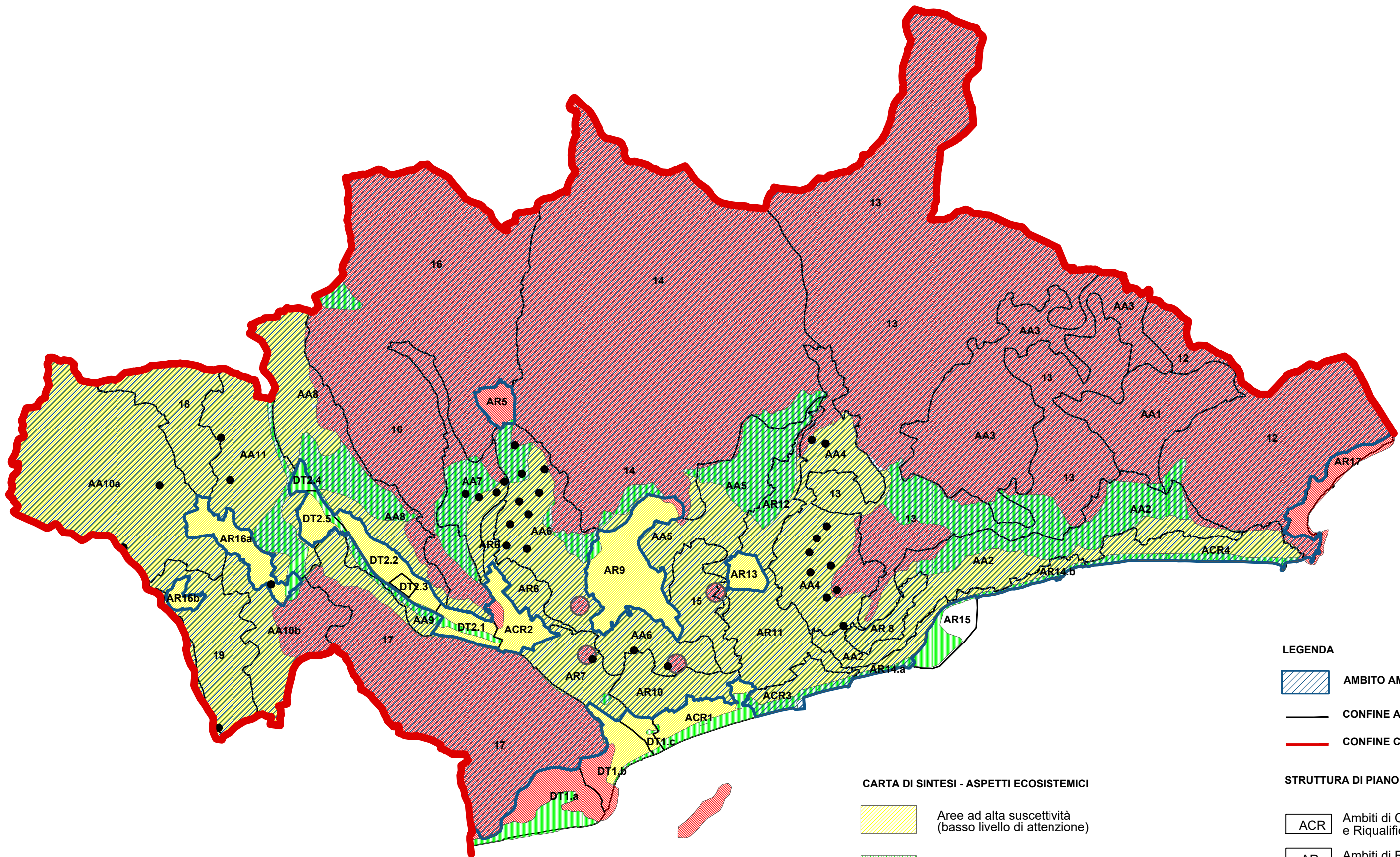


- LEGENDA**
- AMBITO AMMESSO
  - CONFINE AMBITO
  - CONFINE COMUNALE

- RETE FOGNATURE**
- condotta esistente
  - condotta in progetto
  - condotta scarico a mare
  - impianto
  - stazione di pompaggio esistente
  - stazione di pompaggio in progetto

- STRUTTURA DI PIANO**
- ACR Ambiti di Conservazione e Riqualificazione
  - AR Ambiti di Riqualificazione
  - DT Distretti di Trasformazione
  - AA Ambiti Agricoli
  - Concentrazioni Volumetriche





**CARTA DI SINTESI - ASPETTI ECOSISTEMICI**

- Aree ad alta suscettività (basso livello di attenzione)
- Aree a media suscettività (medio livello di attenzione)
- Aree a bassa suscettività (alto livello di attenzione)

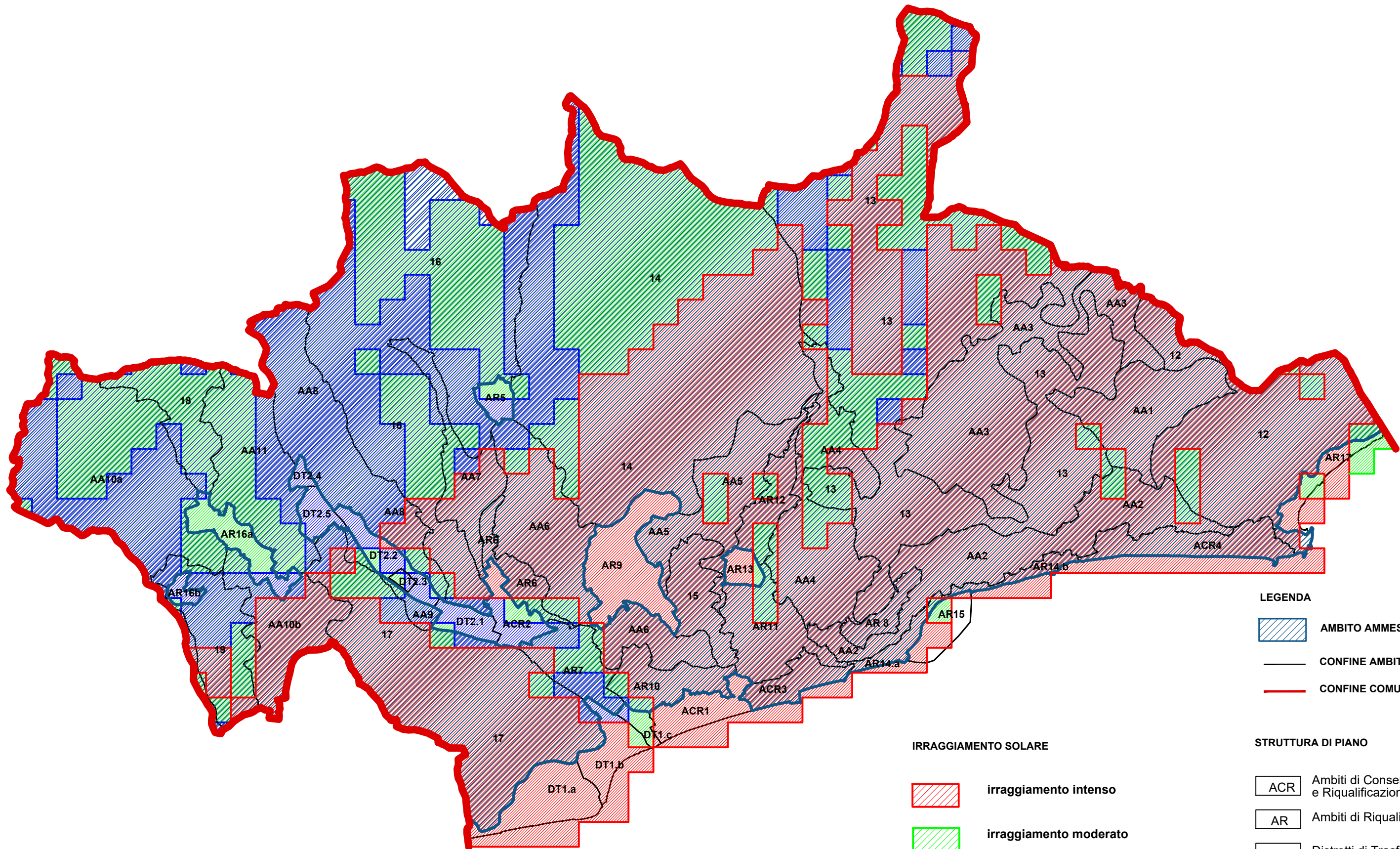
**LEGENDA**




- AMBITO AMMESSO
- CONFINE AMBITO
- CONFINE COMUNALE




**STRUTTURA DI PIANO**

- ACR Ambiti di Conservazione e Riqualificazione
- AR Ambiti di Riqualificazione
- DT Distretti di Trasformazione
- AA Ambiti Agricoli
- Concentrazioni Volumetriche





- LEGENDA**
-  AMBITO AMMESSO
  -  CONFINE AMBITO
  -  CONFINE COMUNALE

- IRRAGGIAMENTO SOLARE**
-  irraggiamento intenso
  -  irraggiamento moderato
  -  irraggiamento debole

- STRUTTURA DI PIANO**
-  ACR Ambiti di Conservazione e Riqualificazione
  -  AR Ambiti di Riqualificazione
  -  DT Distretti di Trasformazione
  -  AA Ambiti Agricoli